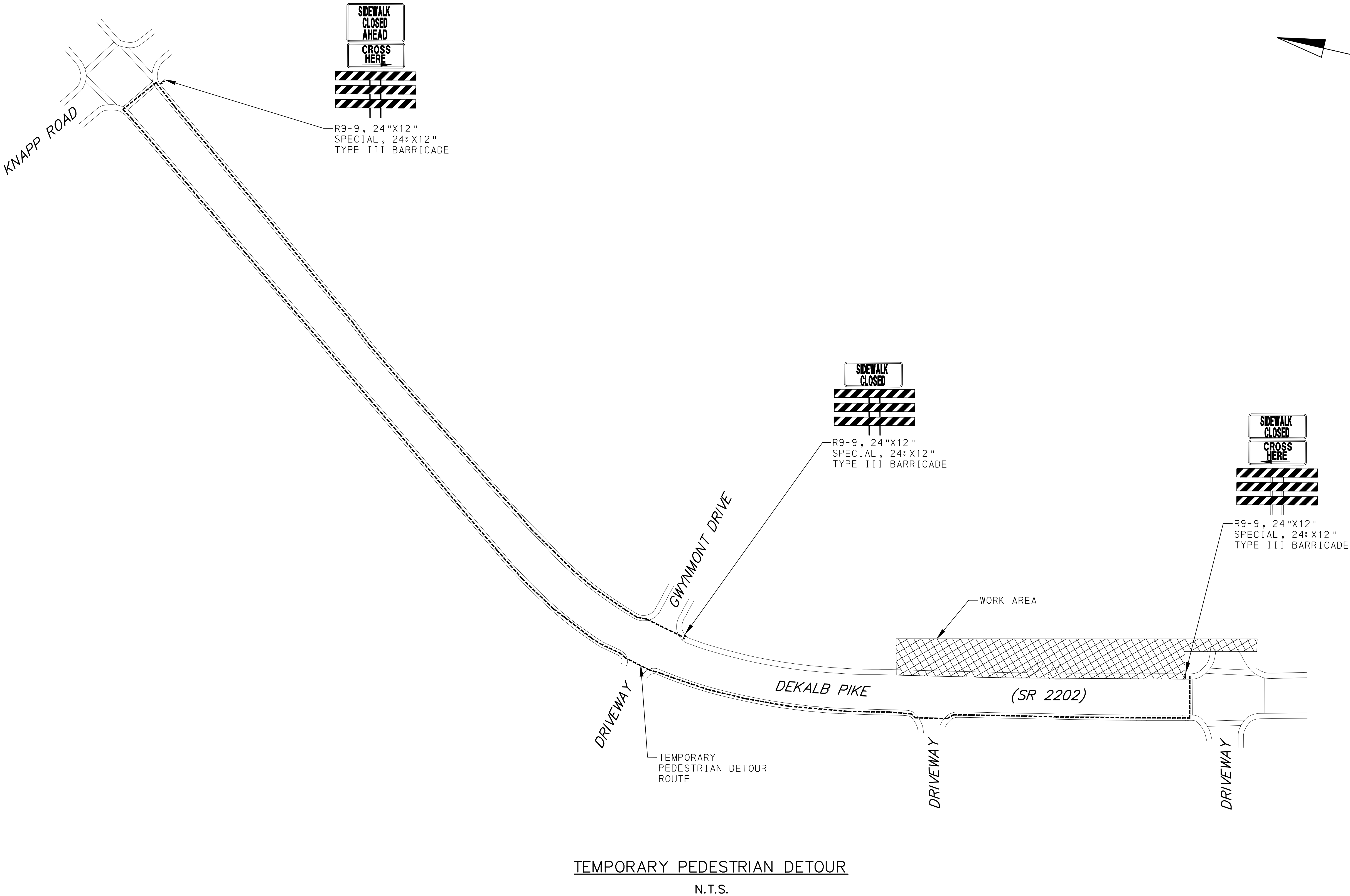
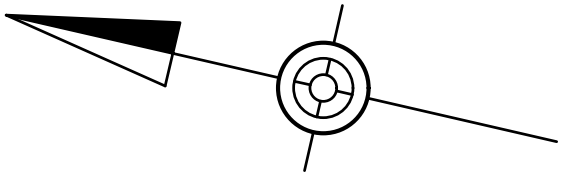


U:\Accurat\ARRAY\ARRAY2201 - Penn Medicine Suburban MOD\DESIGN_SHEETS\SHOP SHEETS\CT-1103.dwg PLOTTED: 4/30/2014 1:23 PM BY: Chana Blum PLOTSTYLE: Penmon10.ctb PROJECT STATUS: ---

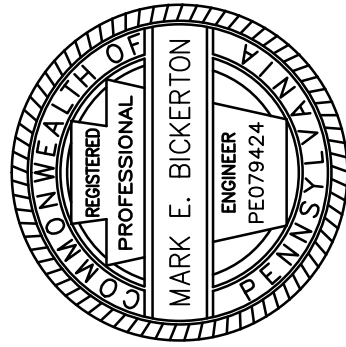


DISTRICT	COUNTY	ROUTE	SECTION	SHEET
6-0	MONTGOMERY	2202		13 OF 15
MONTGOMERY TOWNSHIP				



PENNONI ASSOCIATES INC.
158 W Gay Street, Suite 300
West Chester, PA 19380
T 610.429.8907 F 610.429.8918

ALL DIMENSIONS MUST BE VERIFIED BY CONTRACTOR
AND OWNER MUST BE NOTIFIED OF ANY
DISCREPANCIES BEFORE PROCEEDING WITH WORK



**PENN MEDICINE
MONTGOMERYVILLE**
MONTGOMERY TOWNSHIP
NORTH WALEY, PA 19454

PEDESTRIAN DETOUR
THE TRUSTEES OF THE UNIVERSITY OF
PENNSYLVANIA, OWNER/OPERATOR OF THE
UNIVERSITY OF PENNSYLVANIA HEALTH SYSTEM
3930 CHESTNUT ST
PHILADELPHIA, PA 19104

NO.	DATE	REVISIONS	BY

ALL DOCUMENTS PREPARED BY PENNONI ASSOCIATES
ARE INSTRUMENTS OF SERVICE IN RESPECT OF THE
PROJECT. THEY ARE NOT INTENDED OR REPRESENTED
TO BE SUITABLE FOR REUSE BY OWNER OR OTHERS ON
THE EXTENSIONS OF THE PROJECT OR ON ANY OTHER
PROJECT. ANY REUSE WITHOUT WRITTEN VERIFICATION
OR ADAPTATION BY PENNONI ASSOCIATES FOR THE
SPECIFIC PURPOSE INTENDED WILL BE AT OWNERS
SOLE RISK AND WITHOUT LIABILITY OR LEGAL
EXPOSURE TO PENNONI ASSOCIATES. AND OWNER
SHALL INDEMNIFY AND HOLD HARMLESS PENNONI
ASSOCIATES FROM ALL CLAIMS, DAMAGES, LOSSES AND
EXPENSES ARISING OUT OF OR RESULTING THEREFROM.

PROJECT	ARRAY22001
DATE	2023-07-27
DRAWING SCALE	AS NOTED
DRAWN BY	OTB
APPROVED BY	MEB

CT-1103
SHEET 13 OF 15





